

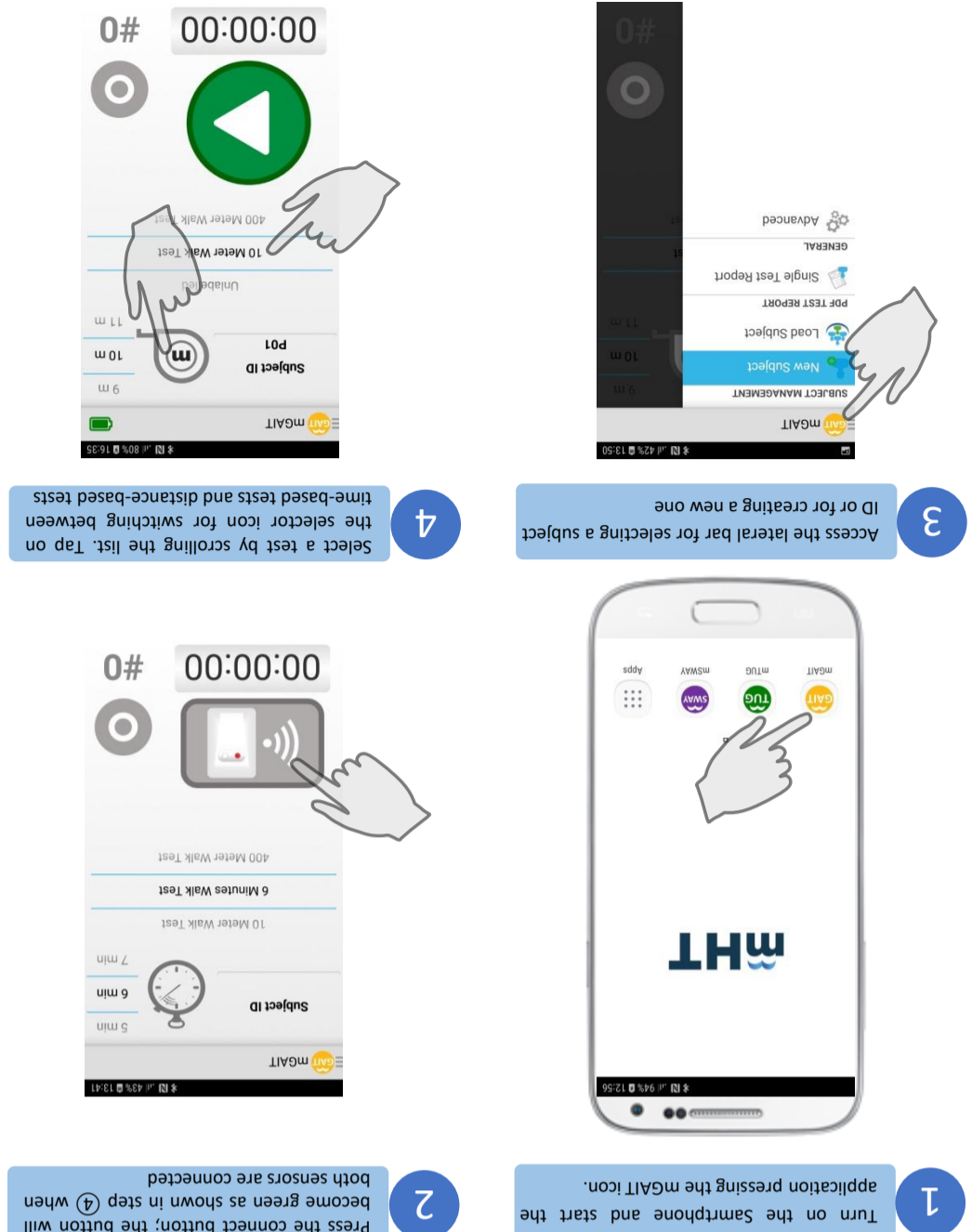
Wearing the Sensors



mGAIT Quick Guide



This guide does not substitute the User Manual and only partially describes the functions and characteristics of mGAIT

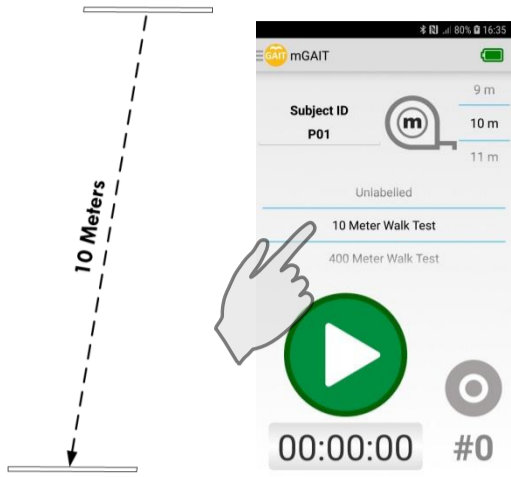


Getting Ready

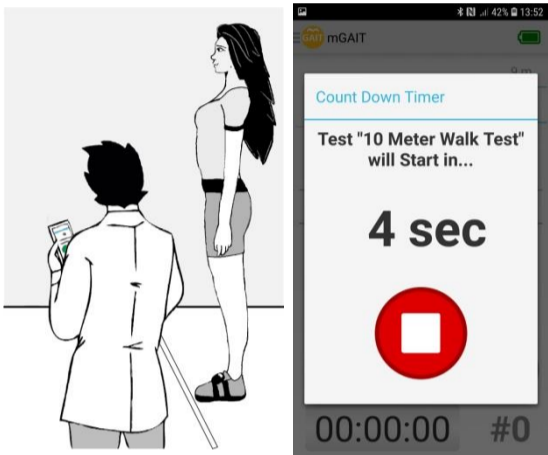
All information contained in this Quick Guide is subject to modification without due notice from the manufacturer.

Performing the 10 Meter Walk Test

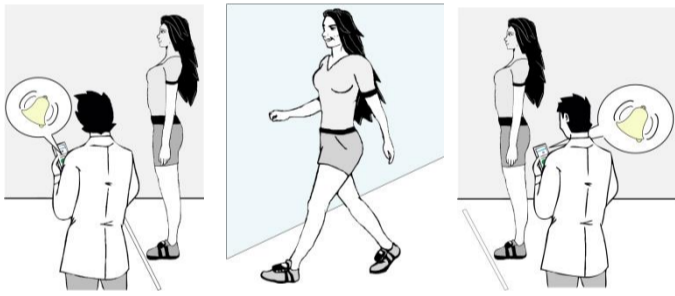
1 Setup the walkway. Select the '10 Meter Walk Test' default label from the list by scrolling the label selector



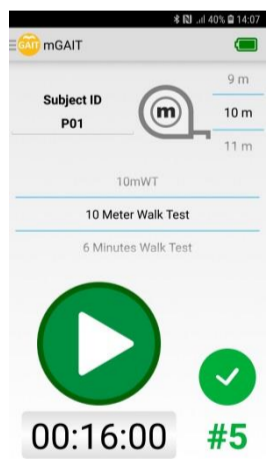
2 The subject waits for the 'go signal' with the feet on the edge of the starting line. Press the green button to begin the test



3 The app provides the 'go signal'. The subject walks till the finish line and stops. The app provides another audio signal at the end of test.

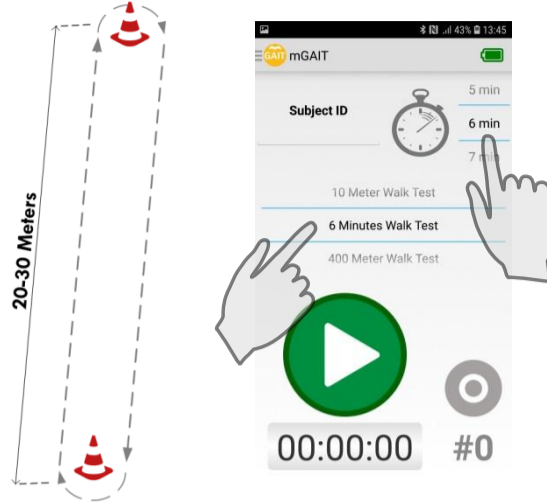


4 If the test was performed correctly, the validity of test indicator will become green

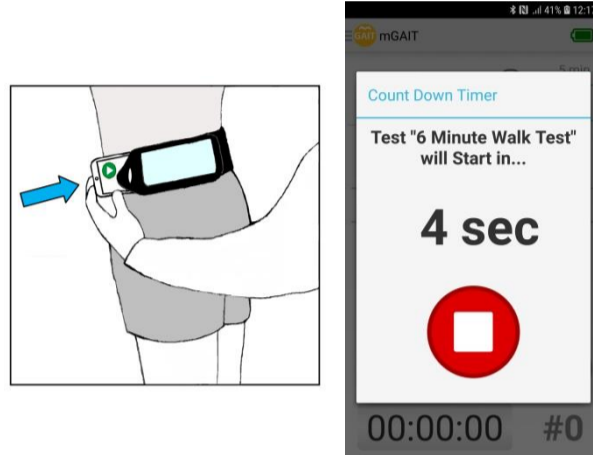


Performing a Time-based Walk Test

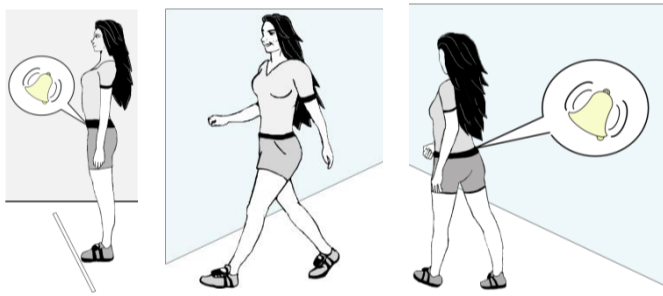
1 Setup the walkway. Select the desired test duration or select the '6 Minutes Walk Test' default label for performing the standard version of the test



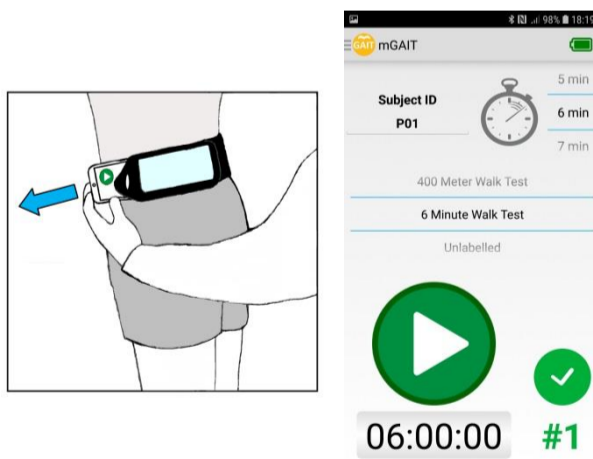
2 Insert the smartphone inside the case waist belt. Press the green button to begin the test.



3 The app provides the 'go signal'. The subject starts walking. The app provides another audio signal after 6 minutes and the test is over

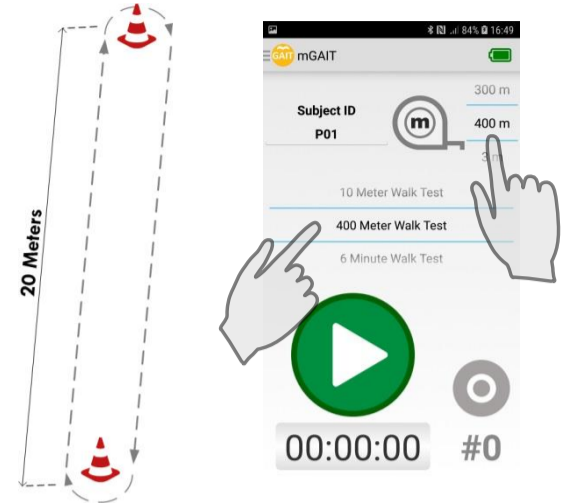


4 Remove the smartphone from the case waist belt. If the test was performed correctly, the validity of test indicator will become green

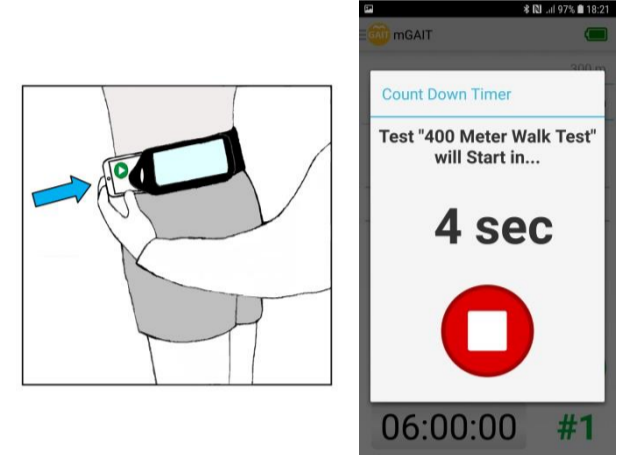


Performing a Distance-based Walk Test

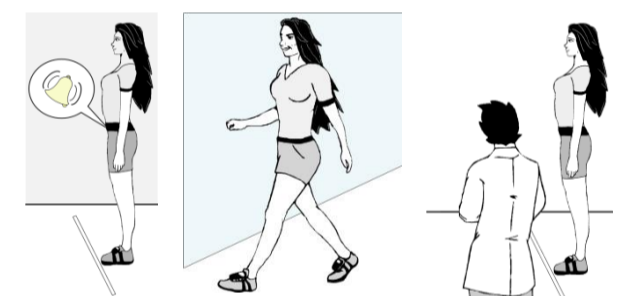
1 Setup the walkway. Select the desired distance or select the '400 Meter Walk Test' default label for performing the standard version of the test



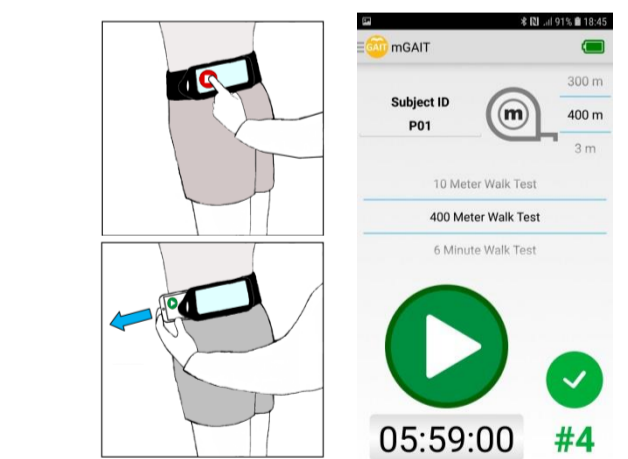
2 Insert the smartphone inside the case waist belt. Press the green button to begin the test.



3 The app provides the 'go signal'. The subject walks, completes all the laps, stops and wait at the finish line.



4 Press the red button and remove the smartphone from the case waist belt. If the test was performed correctly, the validity of test indicator will become green



5 Access the lateral bar. Select the 'Single Test Report'. Select the date and press Select Test. Select the test. If more than one test was correctly performed by the same subject on the same day these will be selectable scrolling the list of available tests. The report will be generated and shown in pdf format.

